

# ART @ WORK LOOKBOOK

---

## /// CONTACT

JULIET FEIBEL  
EXECUTIVE DIRECTOR  
JULIET@ARTSWORCESTER.ORG

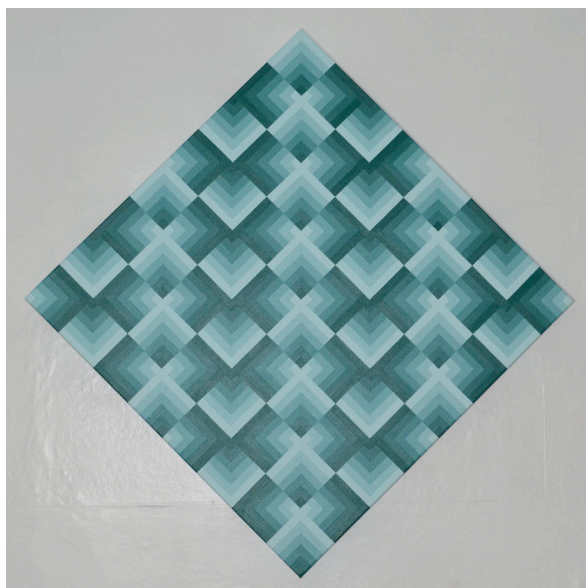
## /// OUR GALLERIES

44 PORTLAND STREET  
508-755-5142  
ARTSWORCESTER.ORG  
@ARTSWORCESTER





*Birches, 2023-7, acrylic on canvas, 20" x 40"*



*2023-2, acrylic on canvas,  
34" x 34"*



*22-1, acrylic on canvas, 24" x 48"*



*Taking Measures*, acrylic on canvas, 18" x 24"



*Every Measure of Itself*, acrylic on canvas, 18" x 24"



*Improvisation*,  
acrylic on canvas, 24" x 24"

# /// KATIE GOLDSTONE

WESTBOROUGH, MA



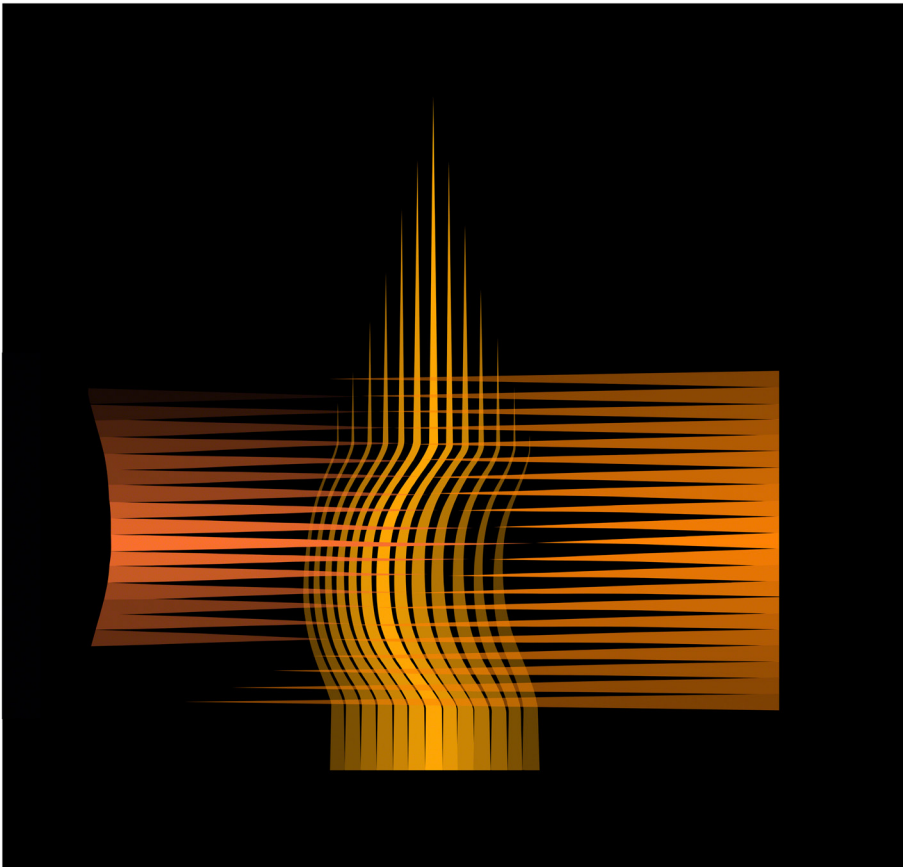
*Rising Sun*, mixed media, 14" x 14"



*Blue Caverns*, mixed media, 18" x 24"



*Topsy Turvy*, mixed media, 24" x 18"



*Equipose No. 1*

1/100

Garry D Harley 2019 ©

(clockwise from top left)

*Equipose No. 1*,  
archival pigment ink on paper,  
24" x 24"

*Red Steps to a Sunrise No. 1*,  
archival pigment ink on paper,  
23 1/4" x 23 1/4"

*Grey Blue Composition- Silver No. 1*,  
archival pigment ink on canvas,  
silver leaf, 36" x 36"



*Oxaca Milfa Series - Red Steps to a Sunrise No. 1*

1/100

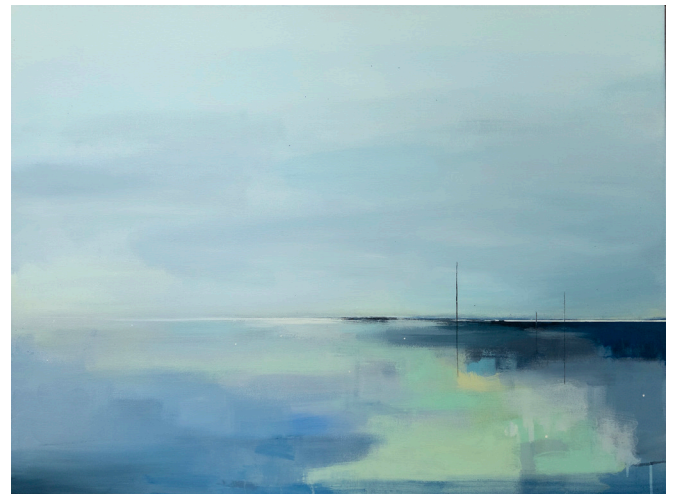
Garry D Harley 2022 ©



*Gentle Hills*, acrylic on canvas, 24" x 36"



*While Wandering*, acrylic on canvas, 30" x 40"



*Harbor Memory*, acrylic on canvas, 30" x 40"

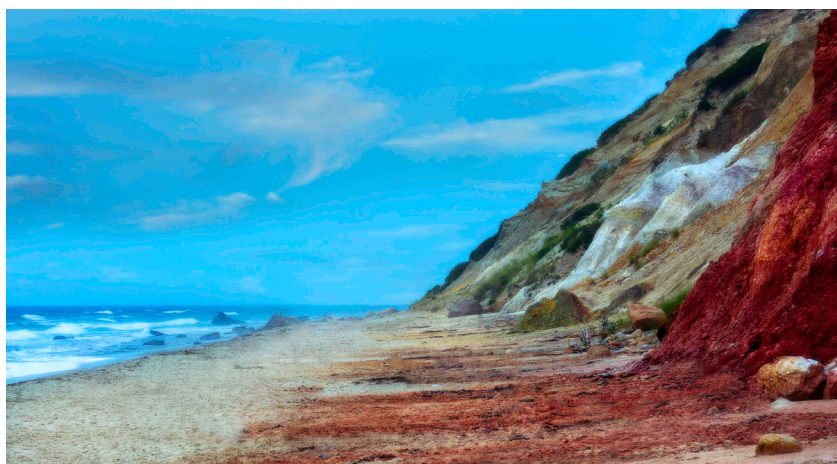


# /// DESMOND JOHNSON

RUTLAND, MA



*Moon over New London Light,*  
photograph on archival fine art  
paper, 16" x 20"



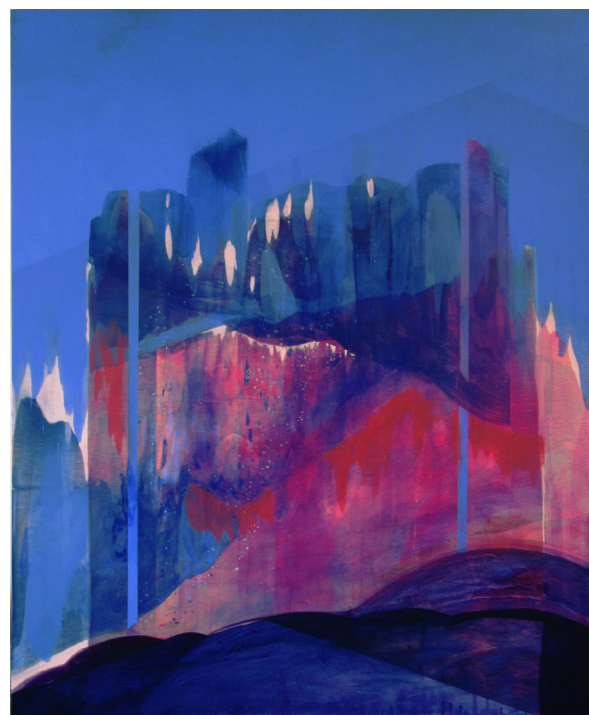
*Running Colors,* photograph on archival fine  
art paper, 16" x 20"



*The Bluff MV,* photograph on archival fine  
art paper, 16" x 20"

# /// LYDIA KINNEY

GREENFIELD, MA



(clockwise from top left)

*Amethyst*, acrylic on canvas, 48" x 36"

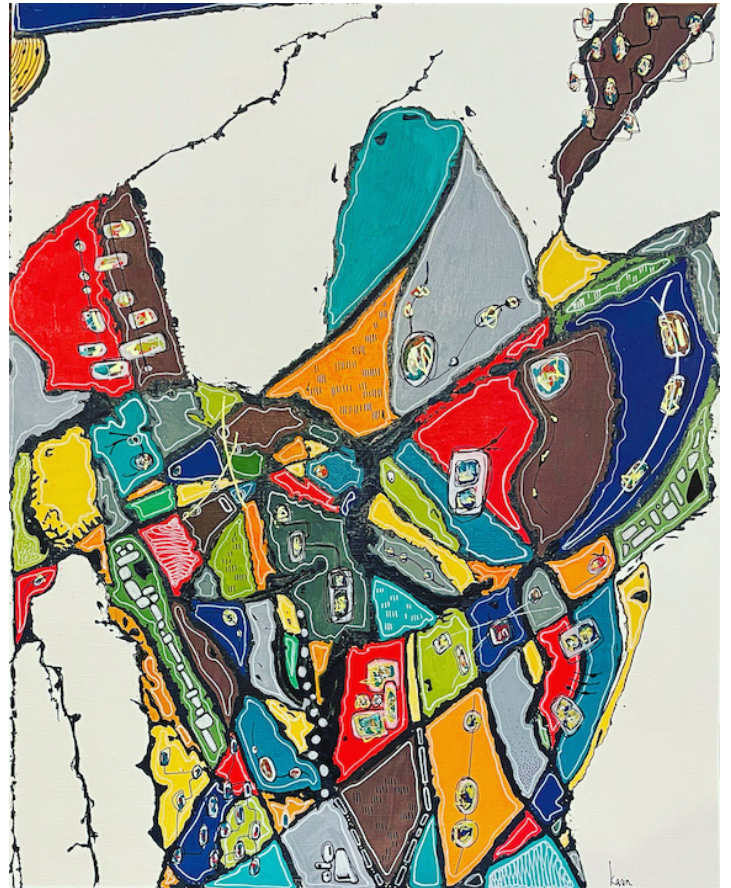
*Banner*, acrylic on canvas, 40" x 30"

*Curtain*, acrylic on panel, 30" x 24"



# /// KARIN KNAPIK-CLOUTIER

BROOKFIELD, MA

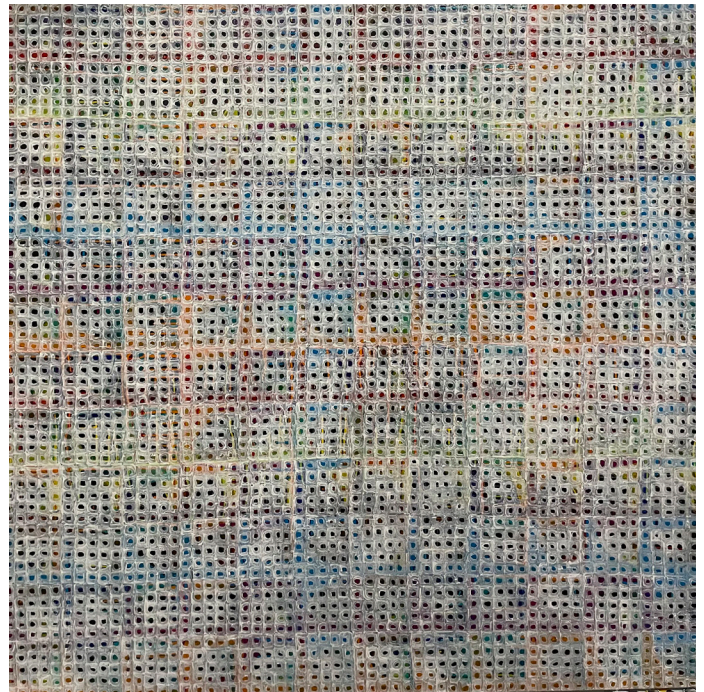
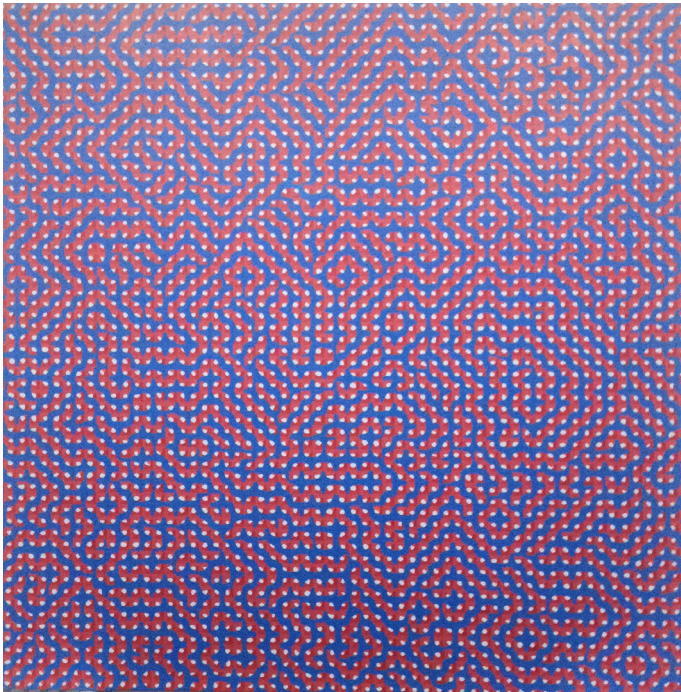


(clockwise from top left)

*Standing Next to Tomorrow*, acrylic on canva-paper,  
20" x 24"

*Maximum Capacity*, acrylic on canva-paper,  
20" x 24" framed

*Station 7*, acrylic on canva-paper,  
20" x 24" framed

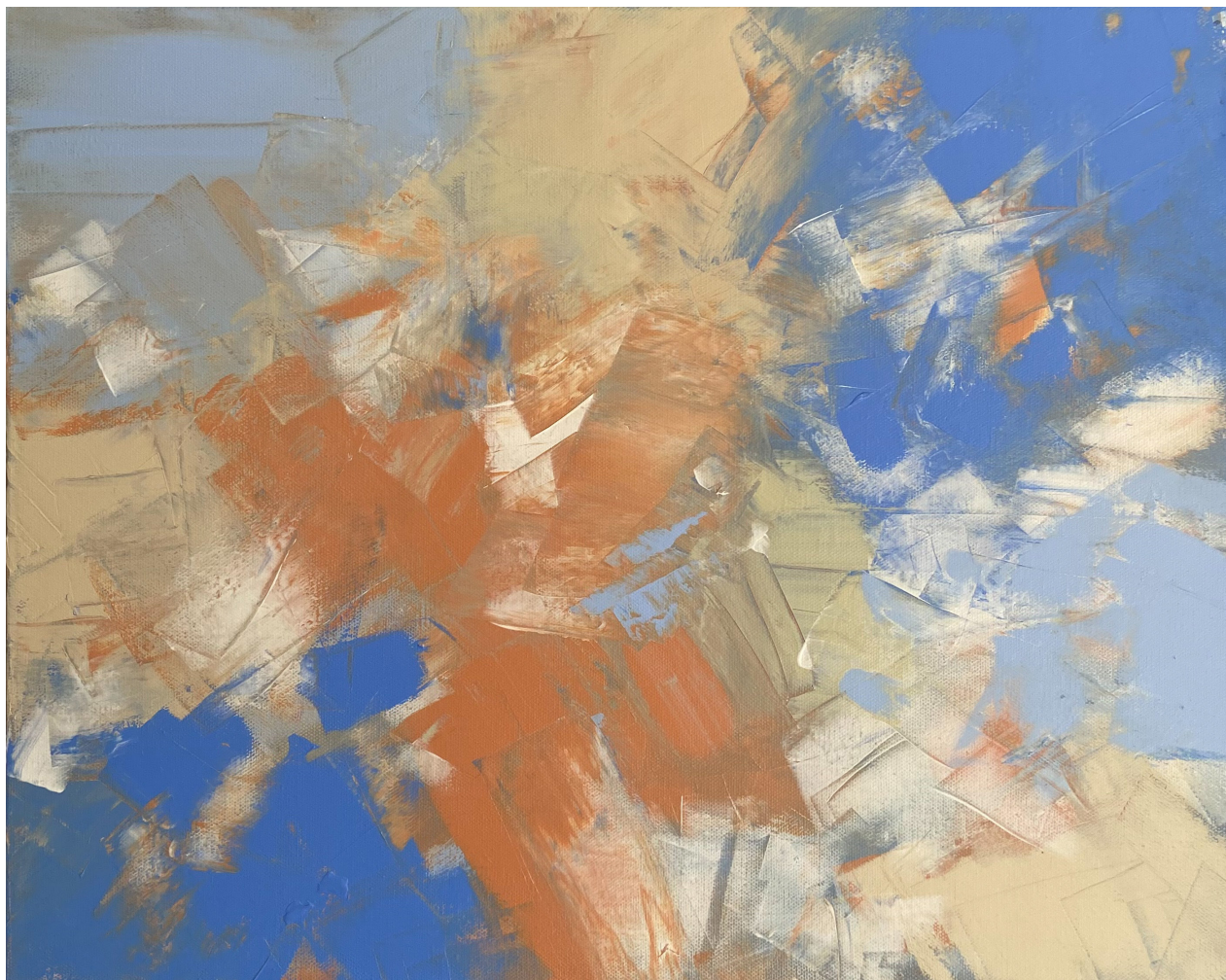


(clockwise from top left)

*Untitled (1)*, acrylic on canvas, 60" x 60"

*Untitled (2)*, acrylic on canvas, 60" x 60"

*Untitled (2)* (detail)



*Run Away with Me*, acrylic, 16" x 20"



*Illusion*,  
mixed media, 16" x 20"

# /// TERRY LAMACCHIA

WORCESTER, MA



*Castleton on Hudson Bridge,*  
acrylic paint, digital photograph, and oil paint stick on canvas, 40" x 60"



*Alone in Boston Tunnel,*  
acrylic paint, digital photograph, and oil paint stick on canvas, 20" x 52"



*Slanted Bridge,*  
acrylic paint, digital photograph, and oil paint stick on canvas, 24" x 60"



(clockwise from top)

*Winter Oaks*, woodcut print on rice paper, 24" x 44" framed

*Chinle Wash*, woodcut print, 25" x 34" framed

*Grand Canyon*, woodcut print, 40" x 28" framed

# /// MELANIE DAI MEDEIROS BARRINGTON, RI



(clockwise from top left)

*Boyden Heights in July*, oil on gallery wrap canvas, 24" x 24"

*August on the East Bay Bike Path*, acrylic with handmade paper on gallery wrapped canvas, 24" x 12"

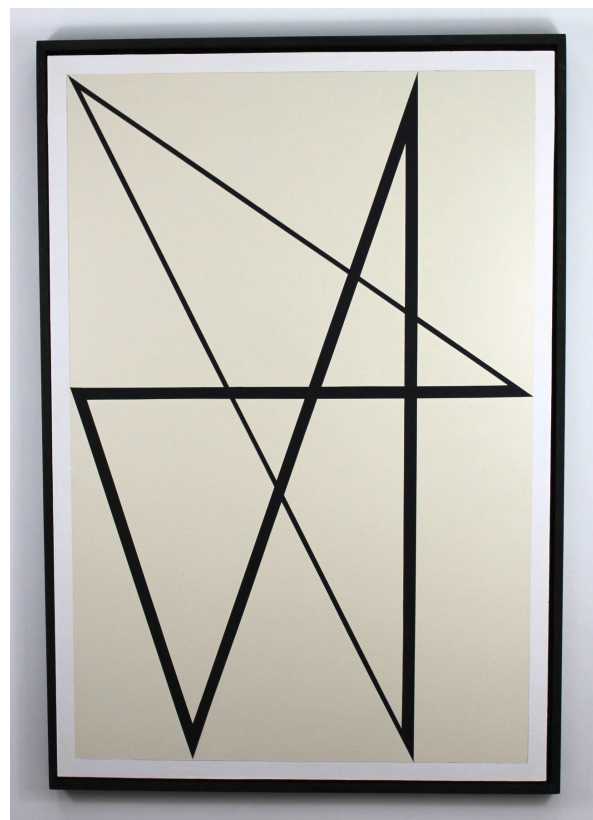
*Little Compton, RI*, acrylic on gallery wrap canvas, 36" x 36"

# /// CHRIS NICHOLSON

CONCORD, MA



*Folded Paper (4 Folds), No. 3, oil on board, 24" x 33"*



*6 Lines, No. 2, oil on board, 27.25" x 40"*



*5, No. 2, oil on board, 22" x 74"*

# /// SCOTT NIEMI

FITZWILLIAM, NH



(clockwise from top left)

*Yearning*, acrylic on gallery wrapped canvas, 30" x 15"

*Secret Guardians*, acrylic on gallery wrapped canvas, 48" x 60"

*Where the Wild Things Are*, acrylic on gallery wrapped canvas, 48" x 60"





(clockwise from top left)

*From the Other Side*, oil on  
linen on cradled wood panel,  
22" x 22"

*Tilt*, acrylic on paper,  
28 3/8" x 21 1/4"

*Round Nine*, oil on paper,  
21" x 28"

# /// MELISSA PARENT

BROOKFIELD, MA



(clockwise from left)

*Ultraviolet Night*, mixed media acrylic, 24" x 48"

*Harvest*, mixed media collage, 22" x 26"

*In September*, mixed media collage, 22" x 26"

# /// LOUISE PIGOTT

SOUTHBRIDGE, MA



*New Beginnings*, acrylic, 30" x 40"



*A Peek Above*, acrylic, 24" x 48"



*Glistening Lavender*,  
acrylic, 24" x 48"

# /// KAREN REID

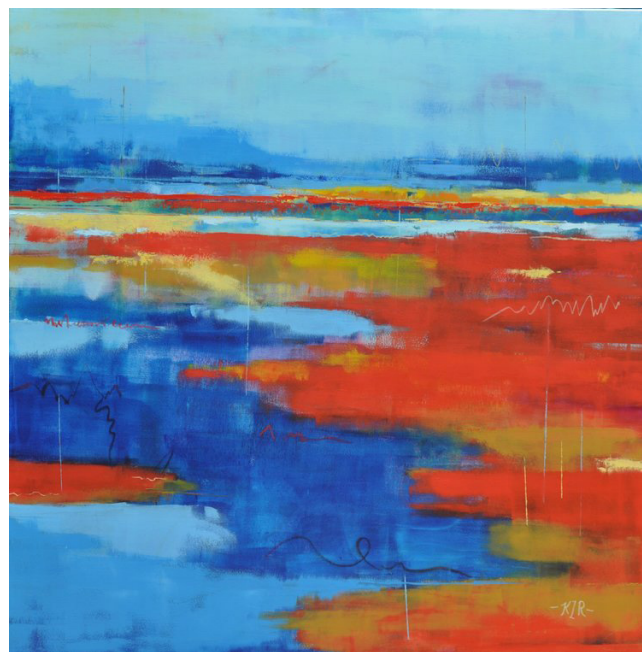
OXFORD, MA



*Horizontal Response*, oil and wax on canvas, 30" x 40"



*Light Conversation*, oil and wax on canvas, 60" x 60"



*Blue Calm*, oil and wax on canvas,  
60" x 60"



(clockwise from top left)

*Dumpster 508-887*, oil and encaustic on braced birch wood panel, 24" x 18"

*Dumpster 1-800*, oil and encaustic on braced birch wood panel

*Dumpster 500*, oil and encaustic on braced bird wood panel, 24" x 24"

# /// CATHY WEAVER TAYLOR

UPTON, MA



*Berkshires,*  
aluminum print,  
24" x 30"



*Blackstone Canal,*  
aluminum print,  
20" x 30"

# /// KATIE VOYT

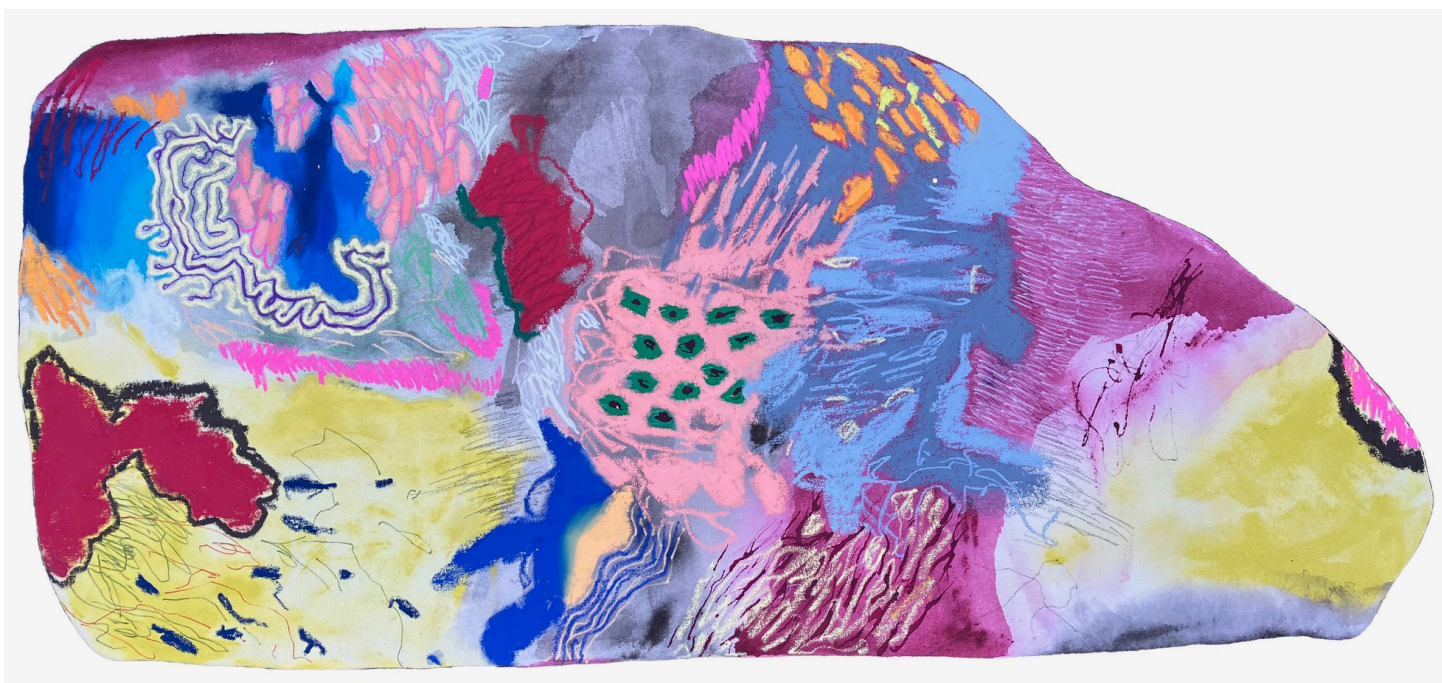
SOUTH YARMOUTH, MA

(clockwise from top left)

*Dark Shoreline*, acrylic on canvas, 18" x 13.5"

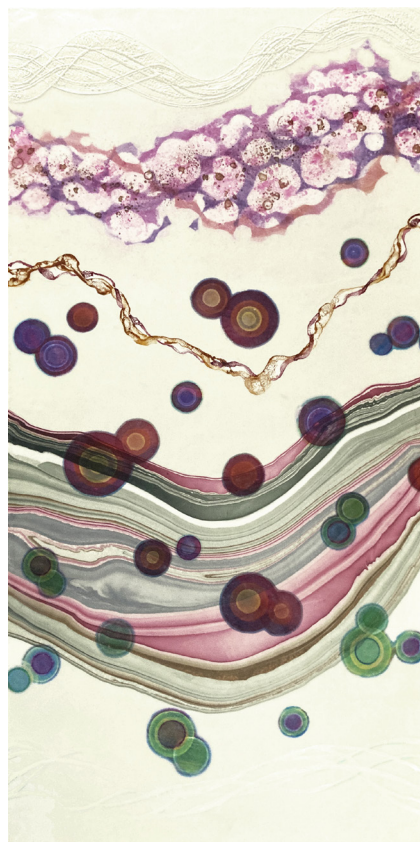
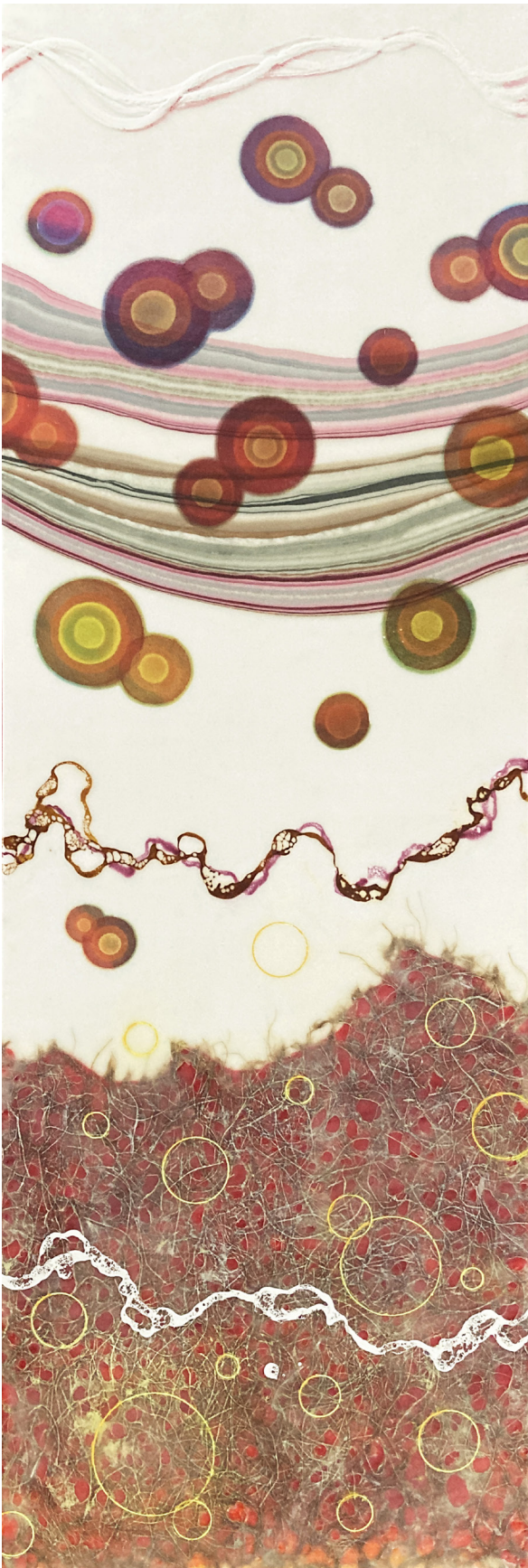
*Something That You Are Not Likely To Tell Me*, acrylic on canvas, 49" x 25"

*Acquisition*, mixed media on canvas, 43" x 19"



# /// NEIL WILKINS

CLINTON, MA



(clockwise from left)

*laminae/Re: 36*,  
encaustic with mixed  
media on wood, 36" x 12"

*Variations, Diptych*,  
acrylic on wood,  
78" x 72"

*laminae/transience: 53*,  
encaustic with mixed  
media on wood,  
48" x 24"